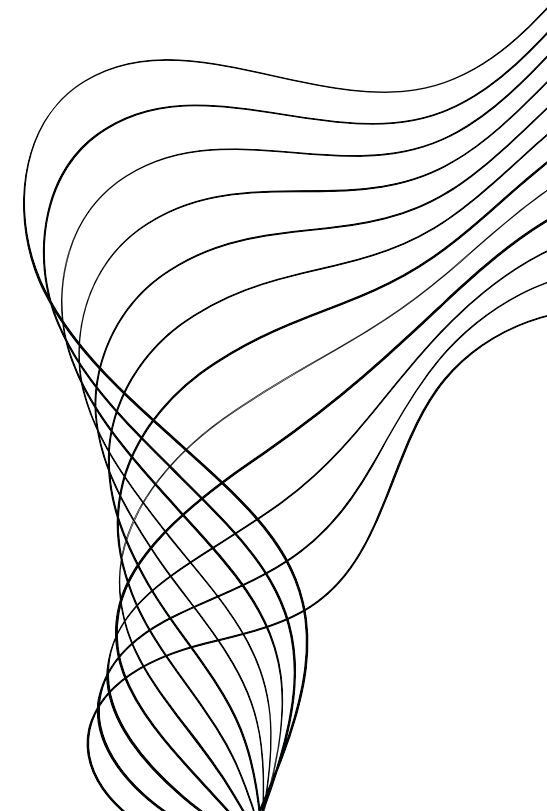


SEM 3 PROJECT 3

GAMUDA CENTRAL PARK

BY KOK MING HUI



GROUP SESSION

GREEN ECO SHIELD

WORKBASE 3 GROUP 1 LOW CARBON

PROJECT BRIEF

This project is about redesigning the areas and the spaces in Gamuda Cove. To solve each issues, aims are provided to be achieved based on client briefs.

VISION & MISSION



Lead the region in innovative breakthrough solutions for large scale public infrastructure and property developments.



Deliver innovative infrastructure solutions and premier townships for stakeholders through core businesses in engineering and construction, property and developments.

CLIENT BRIEF

1. To promote wetland ecosystem
2. To emphasize on sponge city approach and storm water management
3. Protection and revival of flora and fauna habitat
4. Sufficient recreational facilities and amenities for the neighborhood
5. To create a biodiversity placemaking, promoting environment and cultural education
6. Implementation of CPTED in design
7. Provide integrated and seamless connectivity throughout entire park
8. Multi users and multi generation friendly community park

SITE BACKGROUND

GAMUDA COVE
Engineering poverty and infrastructure company based in Malaysia.

GAMUDA LAND
Was a secondary forest adjacent to the wetland.

LOCATION

42700, Persiaran Cove Sentral, Bandar Gamuda Cove, 42700 Dengkil, Selangor

KEY PLAN & LOCATION PLAN



SDG



SITE ISSUES

LACK OF LOW CARBON EDUCATION AND AWARENESS

Based on primary data, the site is lack of platform to spread the low carbon education and awareness directly or indirectly to the community.

CLIMATE ISSUE

The certain areas of the site is considered high surface temperature thus greens solution is suggested.

LACK OF BIODIVERSITY

The site is lack of fauna attractions and interaction with humans.

SITE PLAN



CURRENT FUNCTION

- New developed area
- Recreational area

ACCESSIBILITY



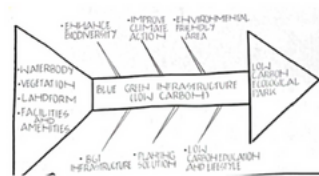
GOAL

To redevelop Gamuda Central Park (Pond C) by applying a blue and green infrastructure approach in order to achieve low carbon ecological park

OBJECTIVES

- To provide activity that promote for low carbon education
- Increase carbon sink sequestration low carbon park by applying a blue green infrastructure
- To increase carbon sink and sequestration

FISH BONE DIAGRAM



SWOT

- S - The central park is high accessibility.
- W - Lack of low carbon education and awareness.
- O - Broad space to redesign the central park.
- T - Climate issue.

The concept is **GREEN ECO-SHIELD**. The concept is inspired by the green shell because of its protection mechanism. The idea is to design an area which can protect the biodiversity while achieving low carbon concept to protect our environment.

Thus, for the plant selection, the plants that have high carbon sequestration will be the priority plant to lower the carbon rate. For hardscape selection, renewable energy facilities will be the choices in this project.

GREEN ECO SHIELD

WORKBASE 3 GROUP 1 LOW CARBON

CONCEPT

GREEN ECO SHIELD

GREEN (ECOLOGICAL)

To increase carbon sink and sequestration.

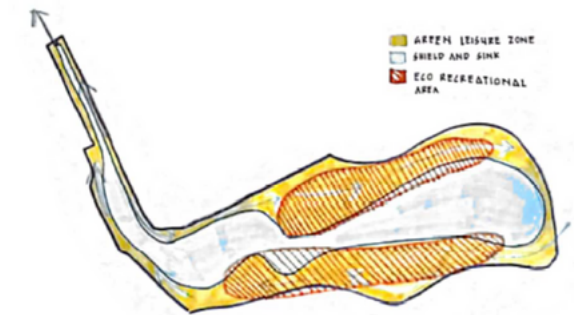
ECO (RECREATION)

Using the environment to promote low carbon education and awareness.

SHIELD (PHYSICAL)

To overcome climate action and protect the environment by using the blue and green infrastructure component.

CONCEPTUAL DIAGRAM



STRATEGIES

STORE

- Increase carbon sink
- Increase carbon sequestration

REDUCE

- Less hot and hard surface
- Less maintenance plants
- Less motorize transport

AIM

To build an eco-friendly as well as promoting low carbon education and awareness.

BUBBLE DIAGRAM



HARDSCAPE AND SOFTSCAPE CONCEPT

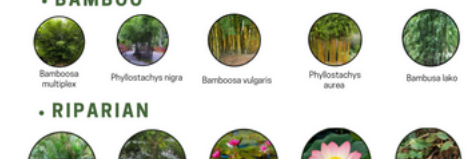
NATURESCAPE AND GREENS

SEQUESTRATION/SINK:

BIG TREE



BAMBOO



RIPARIAN



LOW MAINTENANCE:

NATIVE WOODLAND



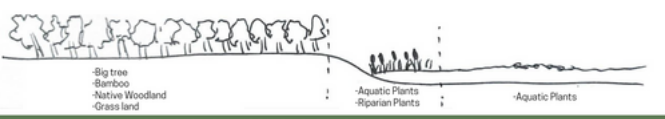
GRASSLAND



AQUATIC

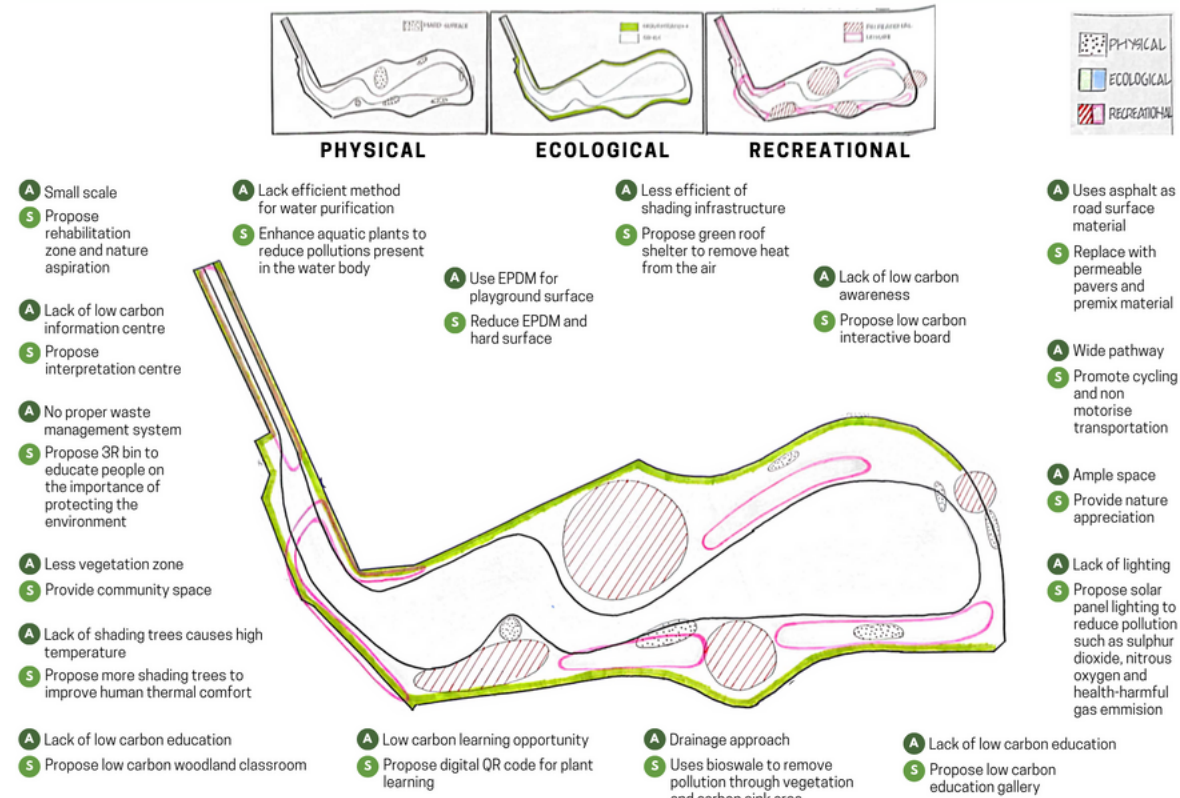


HARDSCAPE:



GROUP SESSION

SYNTHESIS



SCHEMATIC



These two pages show the overall design of Gamuda Central Park, besides protecting the environment, chilling and relaxing zones are also provided as the central park is close to the residential area.

Users' friendly facilities and amenities are prepared to increase the human comfort level to build a healthy community.

MASTERPLAN



SECTION

SECTION A-A'



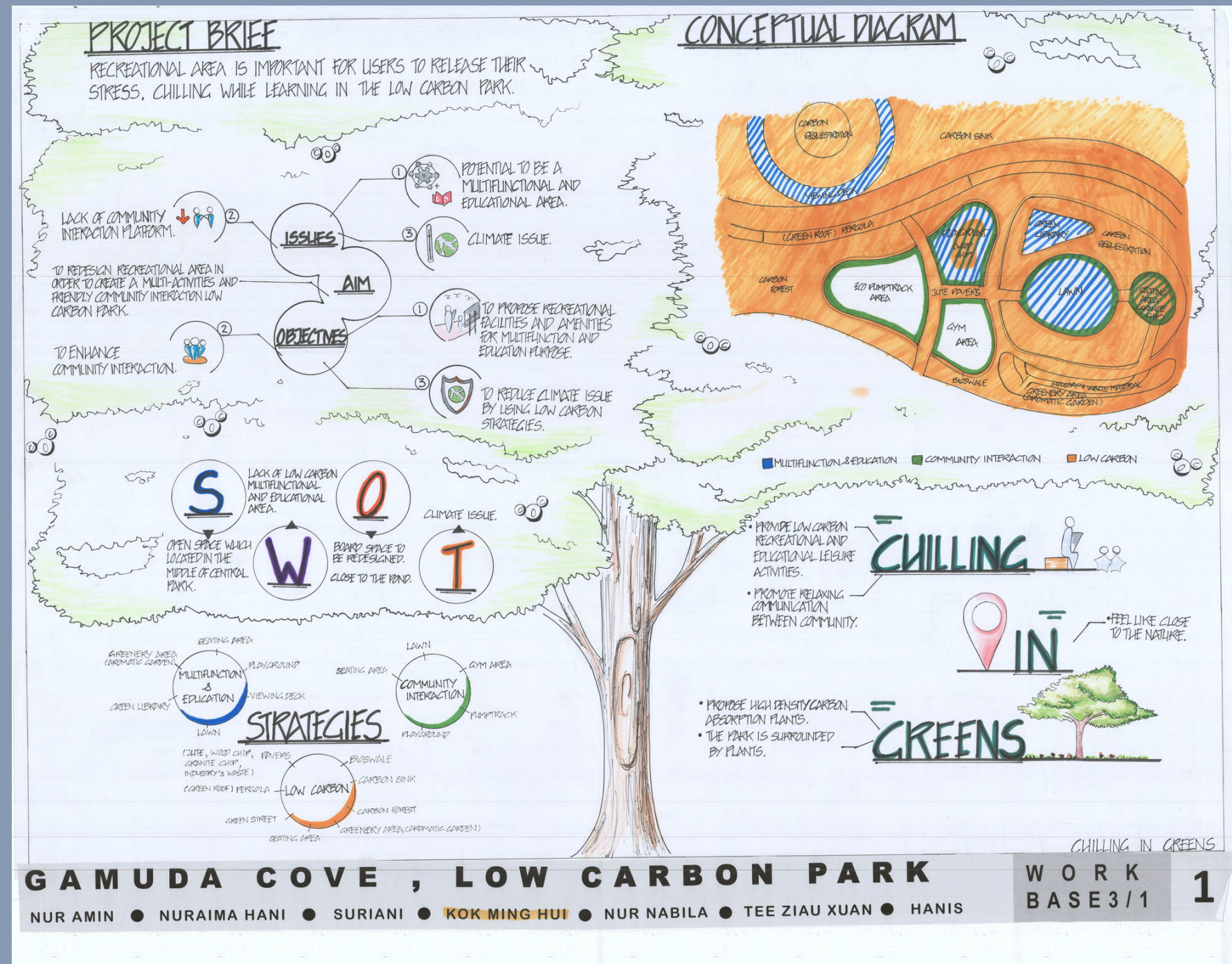
SECTION B-B'



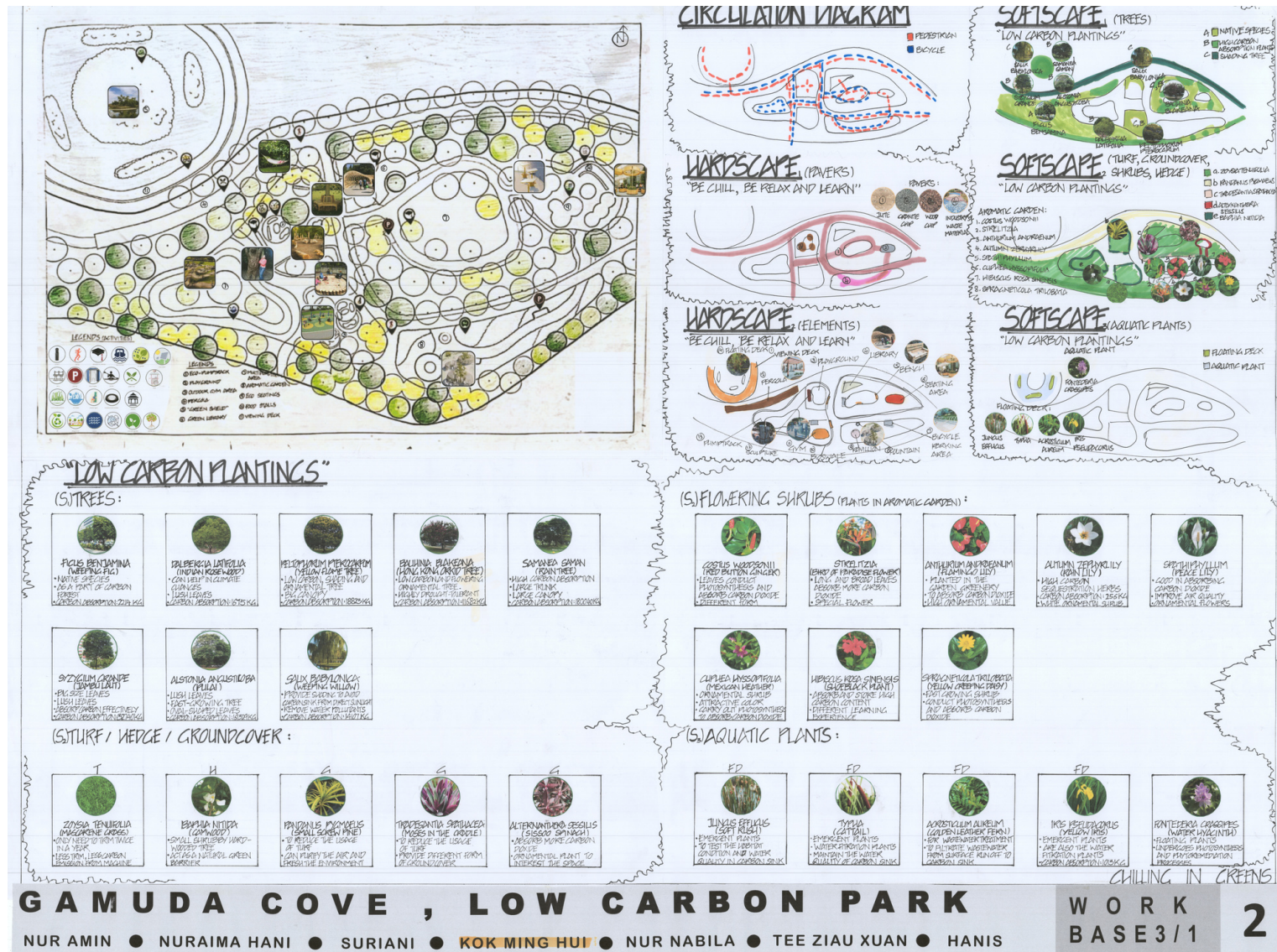
INDIVIDUAL SESSION



For detail master plan, I am focusing on the playground area. The concept of the area is **CHILLING IN GREENS**. The idea is to provide a greenery spaces for social community to enjoy themselves in Central Park.



INDIVIDUAL SESSION SCHEMATIC PLAN



Variety of functional areas are shown in the plan such as children playground area, motivation eco-pumptrack area, eco-seating area, decking area, outdoor library and aromatic garden. The design provides richness sensory experience to "feel" the environment.

DETAIL MASTER PLAN



INDIVIDUAL SESSION SECTION & SKETCHES

Showing the detail of the design, landform, plantings and the functions of each areas.

CONSTRUCTION DRAWING

