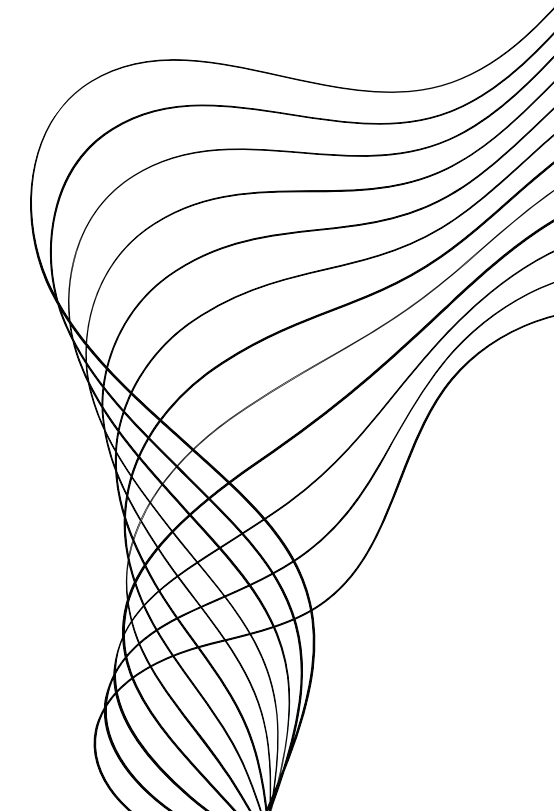


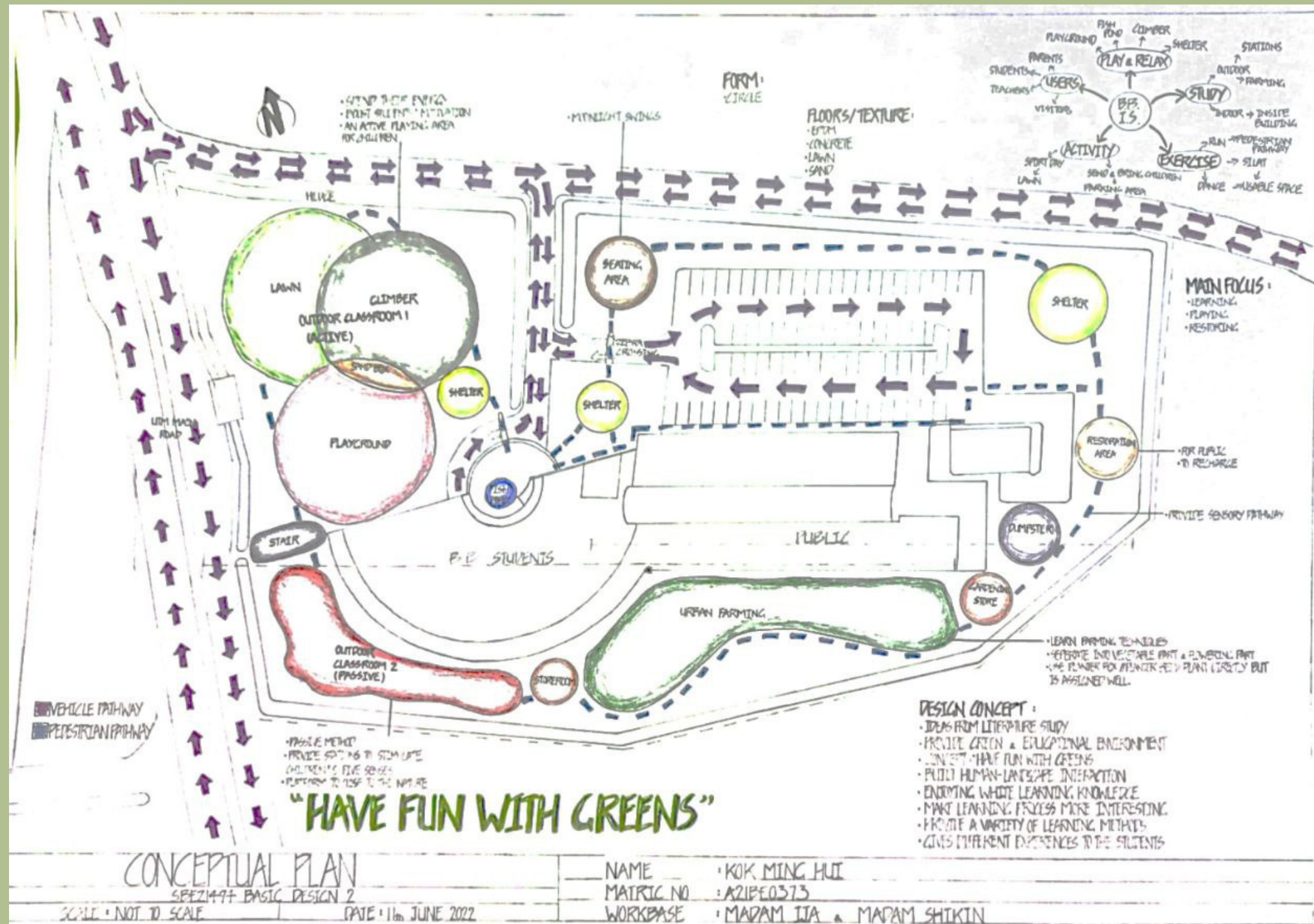
**SEM 2 PROJECT 3**

**BRAINY BRUNCH**

**BY KOK MING HUI**



# CONCEPTUAL PLAN



The design would like to focus on the **eco-interaction between children and environment**. The inspiration was **from the children's happiness when stepping on the grass and enjoy their spaces on the lawn**.

In conceptual plan, accessibility is also one of the important considerations to have a children's friendly landscape design.

# HAVE FUN WITH GREENS



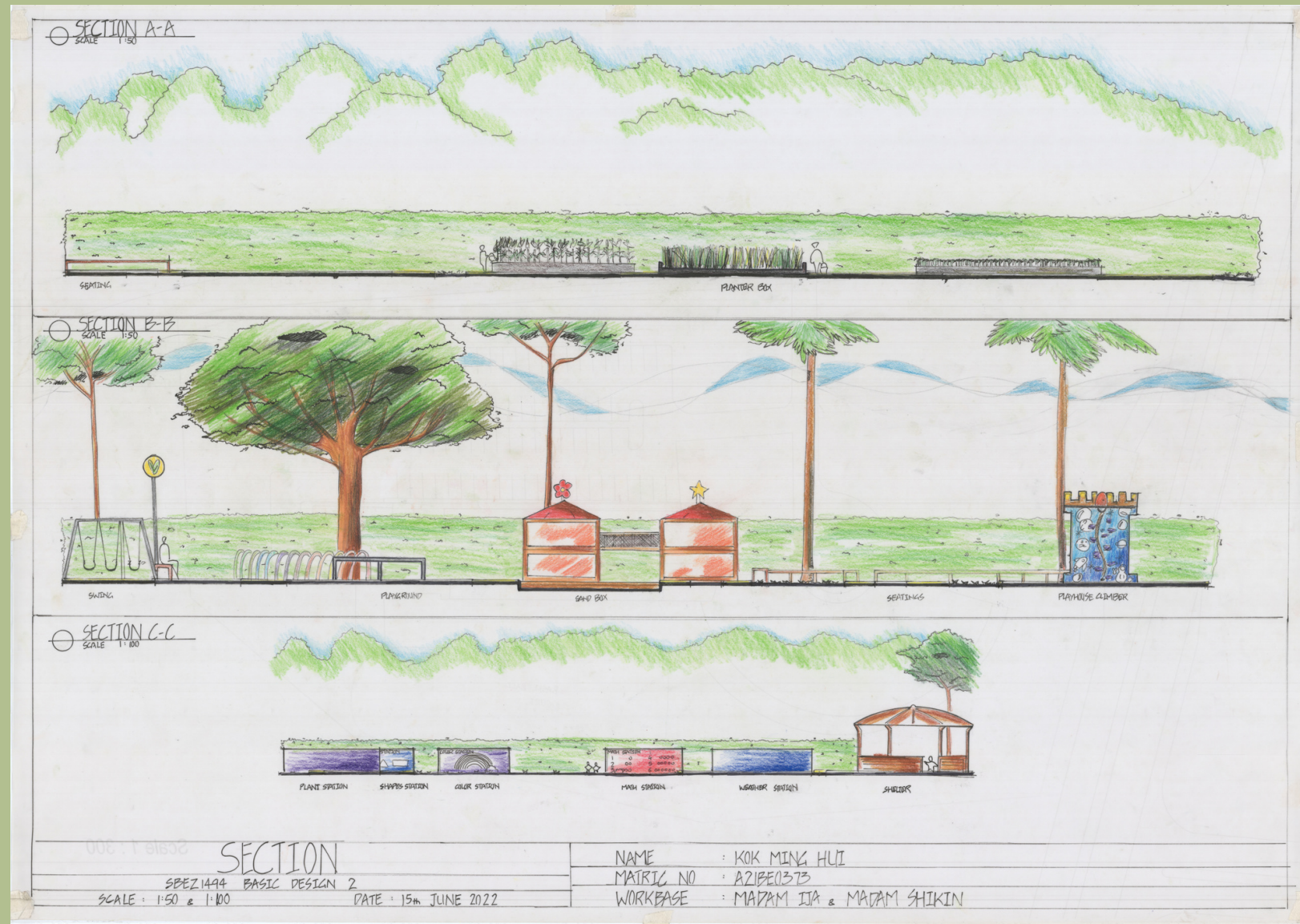
# SITE PLAN



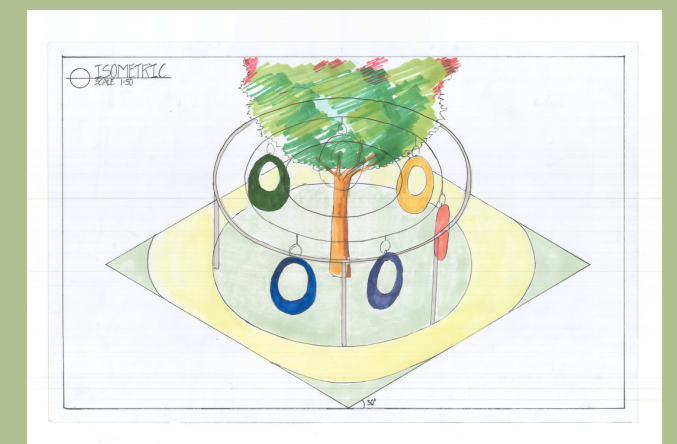
Site plan shows the final design of brainy brunch, interactive areas were proposed and designed to **enhance the concept learning while playing**. The relationship between nature and children also will be closer as their sensory experience were stimulated based on the design.



# SECTION & PERSPECTIVE



The section and perspective show the details of the design. Using greenery and variety of color tone to interest the design primary school and increase the sense of safety among the children. The design also achieve the goal of learning while playing to benefit the children.





# PALETTE

## Planting Palette

**Tree:**

- Dalbergia Latifolia (Indian Rosewood)
- Averrhoa Carambola (Star Fruit)
- Cassia Grandis (Pink Shower Tree)
- Morus Alba (White Mulberry)
- Bauhinia x Blakeana (Hong Kong Orchid Tree)
- Cassia Fistula (Golden Shower Tree)
- Syzygium Myrtifolium (Red Lip)

**Shrub:**

- Tabernaemontana Divaricata (Pinwheelflower)

**Hedge:**

- Duranta Erecta (Golden Dew-drop)
- Ixora Coccinea (West Indian Jasmine)

**Planter box:**

- Ipomoea Aquatica (Water Spinach)
- Cymbopogon (Fresh Lemongrass)
- Dracaena Trifasciata (Snake Plant)
- Spathiphyllum (Peace lily)
- Hibiscus Rosa-sinensis (Shoeblackplant)
- Helianthus Annuus (Sunflower)
- Strelitzia Reginae (Bird Of Paradise Flower)

LANDSCAPE ARCHITECTURE / PROJECT 3 / JUNE 2022 / PLANTING PALETTE / KOK MING HUI

The plantings that need to be included in consideration such as the **coloring, the allergic flowers, functions of the plantings and easily to be maintained.**

For the hardscape, mostly hardscape will related to **playground features, human comfort and safety features.**

## Hardscape Palette

**Learning:**

- Weather Station
- Math Station
- Sensory Pathway

**Playing:**

- Playground
- Sandbox
- Climber
- Moonlight Swing

**Restoring:**

- Fish Pond

**Others:**

- EPDM Carpet
- Concrete Edge
- Artificial Lawn

LANDSCAPE ARCHITECTURE / PROJECT 3 / JUNE 2022 / HARDSCAPE PALETTE / KOK MING HUI